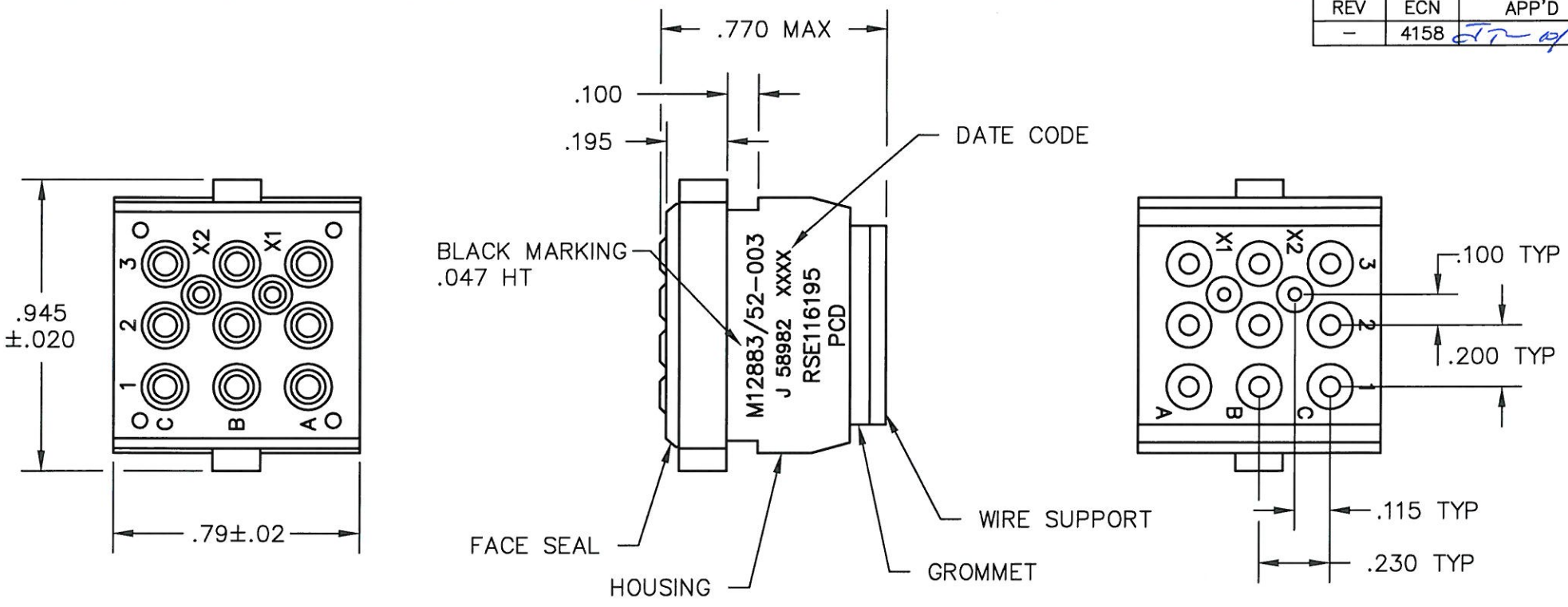


REV	ECN	APP'D
-	4158	<i>TR 10/26/00</i>



- NOTES:**
- MATERIALS:**
 BODY AND WIRE SUPPORT: POLYETHERIMIDE PER MIL-P-46184
 GROMMET AND SEAL: SILICONE RUBBER PER ZZ-R-765
 CONTACT RETAINERS: BERYLLIUM COPPER
 SOCKET CONTACTS: COPPER ALLOY, HARD GOLD PLATED PER MIL-G-45204
 - PERFORMANCE SPECIFICATIONS:**
 OPERATING TEMPERATURE: -65° TO 125° C
 INSULATION RESISTANCE: 1000 MEGOHMS MIN
 DWV: 1500 VRMS AT SEA LEVEL AND 700 VRMS AT 80,000 FT
 VIBRATION AND SHOCK PER MIL-STD-202
 - SOCKET MATES WITH M83536/22-025 RELAYS
 - SOCKET FOR USE WITH PCD TRACK NO. RST145005 (M12883/53-001)

DIMENSIONS ANSI Y14.5M UNITS: INCHES ACAD FILE	TOLERANCES .XX $\pm .01$.XXX $\pm .005$ ANGLES $\pm 2^{\circ}$	PROJECTION 	SPECIFICATION DRAWING			TITLE TRACK MOUNT RELAY SOCKET M12883/52-003	
			ENGR MEL 10/25/00	CHKD <i>Alan A. Pater 10/26/00</i> APPD <i>Frank R 10/26/00</i>		SIZE A	DWG NO. RSE116195
ORIGINAL 	THIS DOCUMENT CONTAINS PROPRIETARY INFORMATION WHICH IS THE CONFIDENTIAL PROPERTY OF PCD, INC. PEABODY, MA, USA		CODE: 58982	SCALE: NONE	SHEET 1 OF 1		