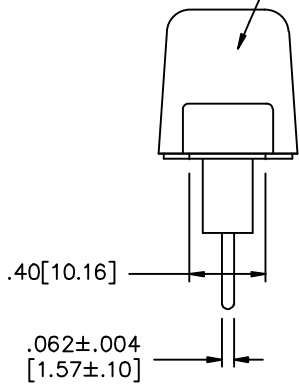


RECOMMENDED CUTOUT

MOUNTING HOLES AS REQUIRED

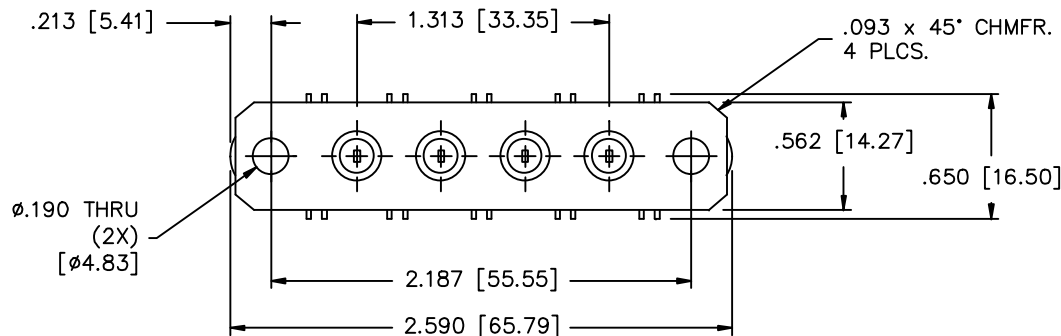
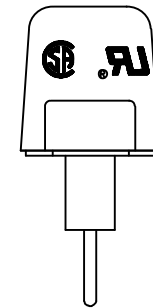
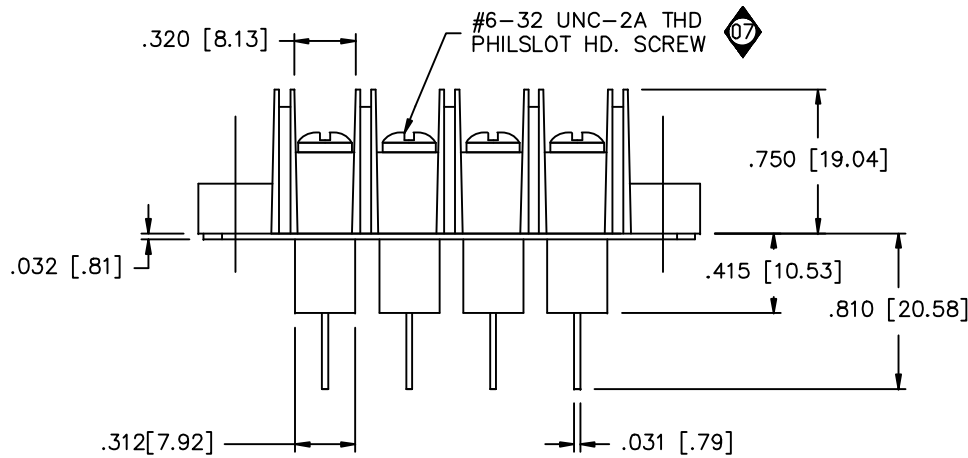
SCI
52-257-004
XXXX - DATE CODE

MARKING:



NOTES:

- 1) VOLTAGE: 250 VAC
- 2) CURRENT: 20 AMPS.
- 3) OPERATING TEMPERATURE: -55°C TO +105°C.
- 4) MATERIAL: BLACK THERMOPLASTIC OR EQUIV.
- 5) SCREW TYPE: #6-32 PHILSLOT HD.
- 6) GROUND PLANE: .032" FLAT WITHIN .012".
- 7) MARKING: 4 PT. CHARACTERS, WHITE INK - CURE @ 65°C, 4Hrs.
- 8) CAPACITANCE: 2000pF MIN/5200pF MAX.
- 9) SEE ROUTING FOR PAKAGING LABELS.
- 10) ALL SHIPPING TRAYS MUST HAVE A LABEL CONTAINING THE FOLLOWING INFORMATION SCI 52-257-004 DATE CODE 250VAC, 20A, 12-22 AWG, UL LOGO/CSA LOGO



TEST SEQUENCE				
STEP	QTY	REF.	TEST	RESULT
STEP 0100	94-1002-00	CAP./D.F.	PASS	FAIL
PER IT 38-0245		OPER:		
CAP: 2000pF TO 5200pF				
DF. ≤4% MAX				
COMMENTS: 100%				
STEP 0200	94-2005-00	DWV	PASS	FAIL
PER IT 38-0245		OPER:		
DWV: 1500 VAC 25°C				
1 MINUTE MINIMUM				
COMMENTS: 100%				
STEP 0300	94-2015-00	I.R.	PASS	FAIL
PER IT 38-0245		OPER:		
IR: 350VDC, 1000 Mohms MIN.				
2 MINUTES MAX.				
COMMENTS: 100%				
STEP 0400	94-4033-00	VISUAL/MECH.	PASS	FAIL
PER IT 38-0468		OPER:		
INSPECT DIMENSIONS				
AND WORKMANSHIP.				
PER MIL-STD-105, LEVEL II, 1% AQL				
COMMENTS: 100%				

										UNLESS OTHERWISE SPECIFIED	TOLERANCES UNLESS OTHERWISE SPECIFIED	 SPECTRUM CONTROL INC.	FAIRVIEW PENNSYLVANIA	
										DIMENSIONS ARE IN INCHES. (MILLIMETERS)	Fractions ± 1/64		Dec. .xxx ± .03	Description
										DO NOT SCALE.	Dec. .xxx ± .020		Angles ± 0° 30'	Filter Terminal Block
										CHANGE NOTICE	CODE IDENT. NO. OLSP2		Engr. GRUNAUER	52-257-004
													Sheet 1 of 1	