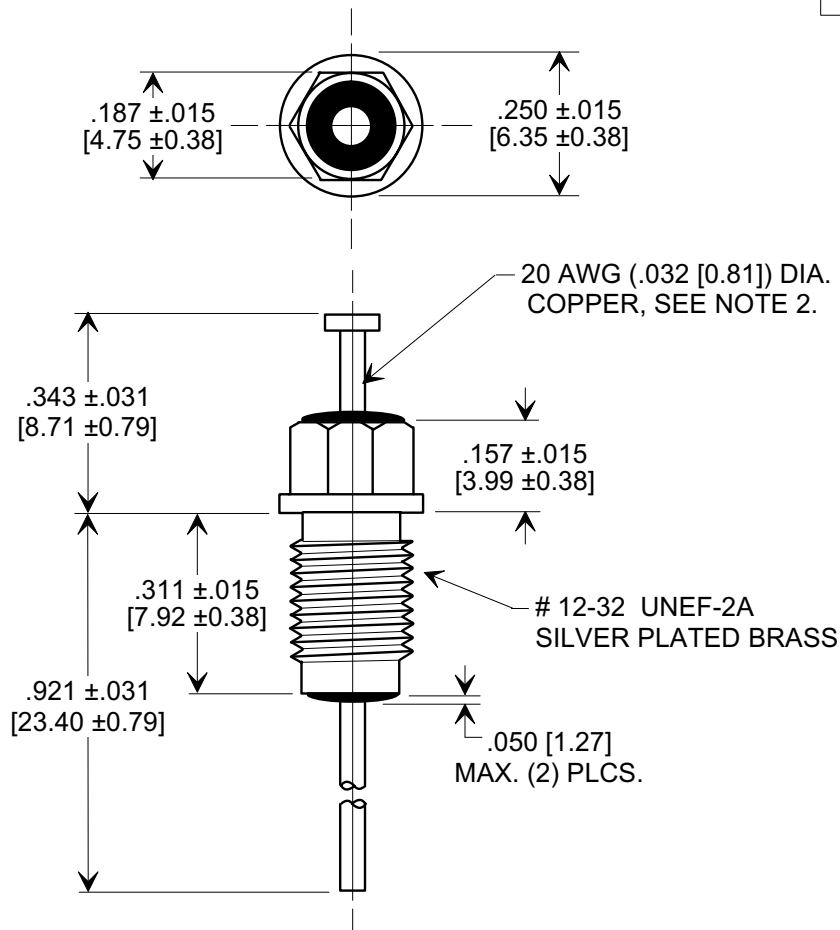
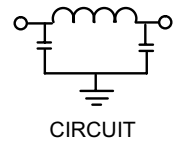
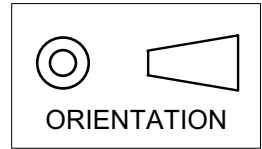


MARKETING SALES DRAWING
DIMENSIONS IN INCHES - DO NOT SCALE THIS DRAWING
DIMENSIONS IN METRIC - []

Electrical Testing
per Tusonix standard
test plans and Mil-Std-202
Test Methods.



NOTES:

- TUSONIX STANDARD PART NUMBER: 4203-053.
TUSONIX RoHS COMPLIANT PART NUMBER: 4203-053 LF.
CUSTOMER MUST SPECIFY STANDARD OR RoHS PART NUMBER WHEN ORDERING.
- LEAD FINISH: STANDARD PART #: 60/40 SOLDER PLATED COPPER. RoHS PART #: SILVER PLATED COPPER.
- PART MARKING: TRADEMARK AND VARIATION NUMBER ON HEX FLATS.
STANDARD PART: BLACK INK. RoHS PART: GREEN INK.
- SUPPLIED WITH SILVER PLATED COPPER ALLOY HEX NUT AND INTERNAL TOOTH LOCK WASHER.

MIN. CAP. (pF)	WORKING VOLTAGE (VVdc)		CURRENT IDC	I.R. MIN. @ 100 (VDC.)	DWV (VDC)	MINIMUM NO LOAD INSERTION LOSS (dB) AT 25°C PER MIL-STD -220			
	85°C	125°C				10 MHz	100 MHz	1 GHz	10 GHz
5000	200	100	10A	10 G Ω	400	20	65	70	70

REVISION RECORD	0	CONCENTRIC WITH BUSHING WITHIN .020 & .040 DELETED. L.E. 11-17-86	1	RDN TO COMP FMT. ADDED METRIC, REVISED TOLS ADDED NOTES & CIRCUIT. S.M. 08-12-99	2	ADDED IR & DWV. ADDED AND REVISED NOTES. S.M. 11-15-05	3	20051027-3-04	TOLERANCES unless otherwise specified		Title BUSHING STYLE EMI FILTER
	2 PLC. DECIMAL ± $\frac{\quad}{\quad}$										
	3 PLC. DECIMAL ± $\frac{\quad}{\quad}$										
	ANGLES ± $\frac{\quad}{\quad}$										
C.O. 2837		3025	19990812-1-01	20051027-3-04	TUSONIX		Drawn	S.M. 08-12-99	Scale	3 X	
X-2015 Rev-0					TUCSON, ARIZONA		Approved	E.F. 08-12-99	A	4203-053	